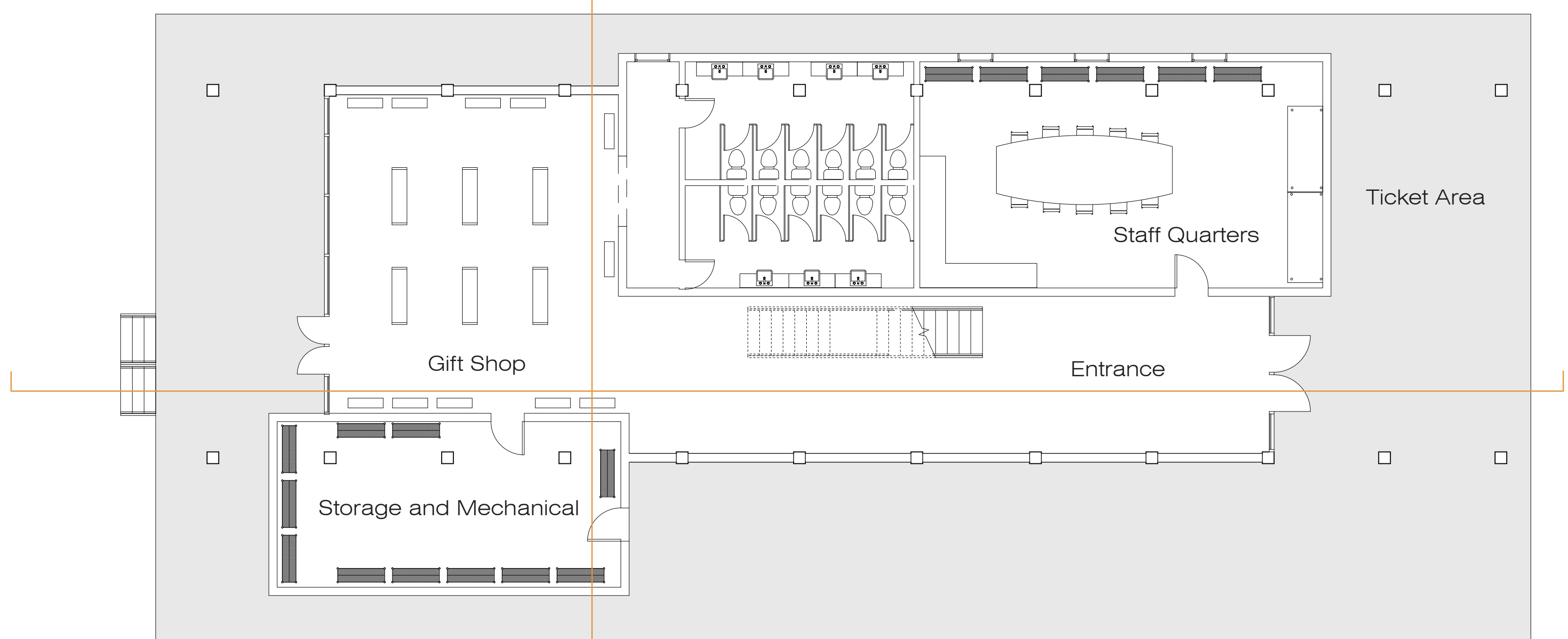


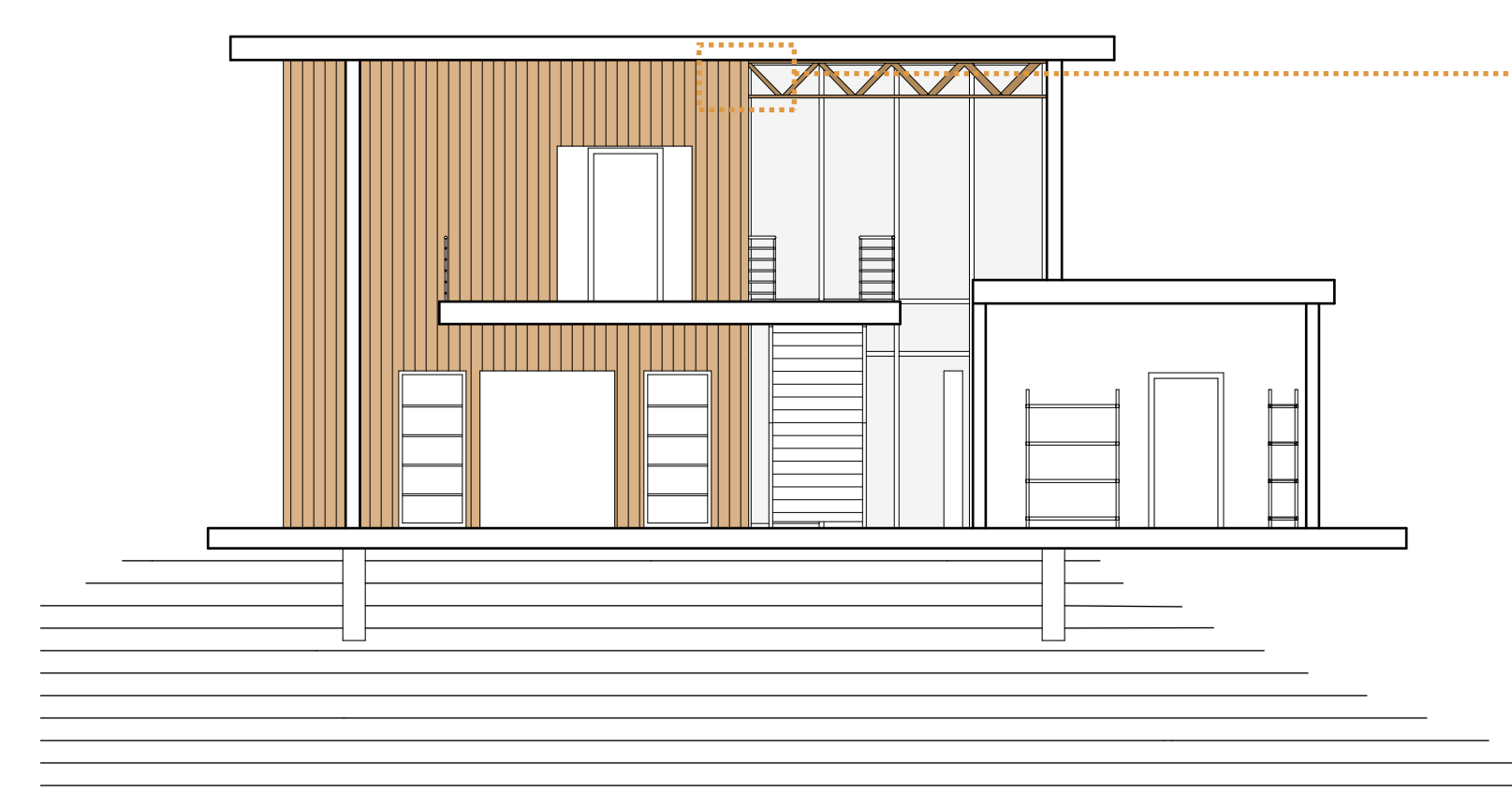
Second Floor Plan 1/8" = 1'



First Floor Plan 1/8" = 1'

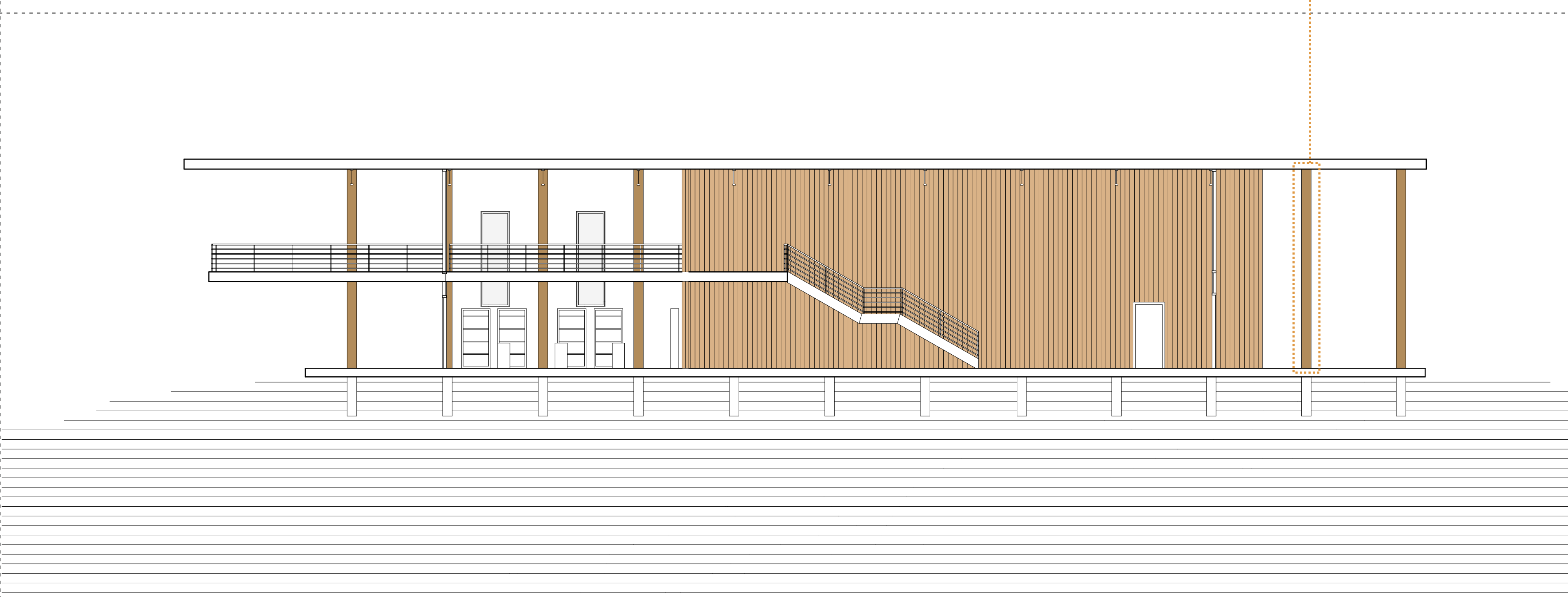


View to Farnsworth House



Transverse Section 1/8" = 1'

The trees cleared in order to create a direct line of sight to the Farnsworth home will be re-purposed into trusses, columns, and siding.



Longitudinal Section 1/8" = 1'



# Farnsworth Visitor Center

